

Prof. Dr. Oliver Hahm

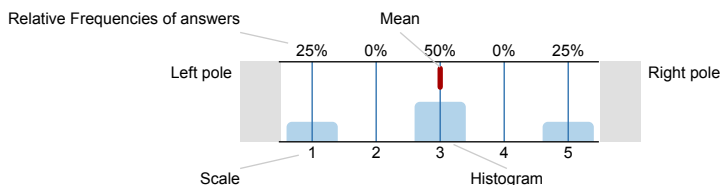
Instructor profile (WiSe21/22)
No. of responses = 31



Survey Results

Legend

Question text



n=No. of responses
av.=Mean
dev.=Std. Dev.
ab.=Abstention

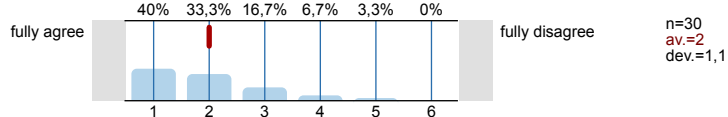
1. Please specify how far you agree or disagree with the following statements concerning this course.
Please cross only one box.

| Statement | 1 | 2 | 3 | 4 | 5 | 6 | Summary |
|--|-------|-------|-------|-------|------|------|--------------------------------------|
| 1.1) The structure of the course content is logical/comprehensible. | 43,3% | 33,3% | 10% | 10% | 3,3% | 0% | n=30 av.=2 dev.=1,1 |
| 1.2) The lecturer is able to make complex contents comprehensible. | 40% | 33,3% | 10% | 10% | 6,7% | 0% | n=30 av.=2,1 dev.=1,2 |
| 1.3) The course is taught in an interesting way. | 16,7% | 26,7% | 43,3% | 3,3% | 10% | 0% | n=30 av.=2,6 dev.=1,1 |
| 1.4) Discussions are well moderated (stimulation of contributions, thoroughness in answering to contributions, timing, halting of non-stop talkers). | 69% | 13,8% | 6,9% | 10,3% | 0% | 0% | n=29 av.=1,6 dev.=1 |
| 1.5) There is sufficient discussion/ there is enough opportunity for questions. | 69% | 13,8% | 10,3% | 6,9% | 0% | 0% | n=29 av.=1,6 dev.=0,9 |
| 1.6) The course enhances my interest in my studies. | 36,7% | 30% | 23,3% | 3,3% | 3,3% | 3,3% | n=30 av.=2,2 dev.=1,3 |
| 1.7) The accompanying materials (scripts, bibliographies, internet, etc.) are helpful | 40% | 40% | 6,7% | 6,7% | 6,7% | 0% | n=30 av.=2 dev.=1,2 |
| 1.8) The lecturer is sufficiently reachable outside the course times as well. | 64% | 12% | 20% | 0% | 4% | 0% | n=25 av.=1,7 dev.=1,1 ab.=5 |

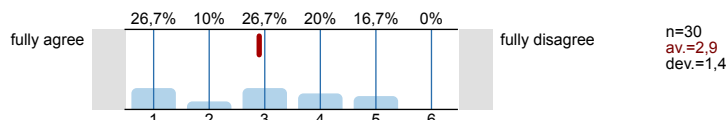
2. Assessment of knowledge gains

The topic of the module/ unit is interesting to me.

2.1) This is my assessment after the module/ unit.

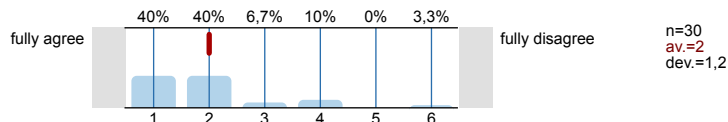


2.2) This is my assessment before the module/ unit.

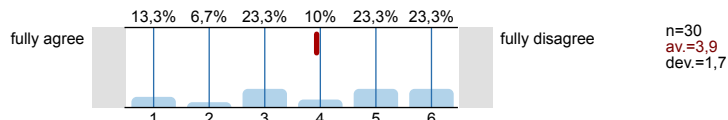


I know a lot about the topic of the module/ unit.

2.3) This is my assessment after the module/ unit.

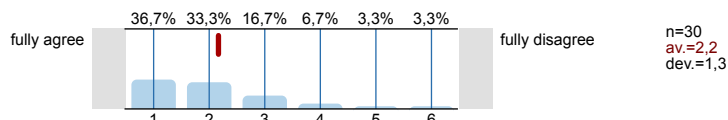


2.4) This is my assessment before the module/ unit.

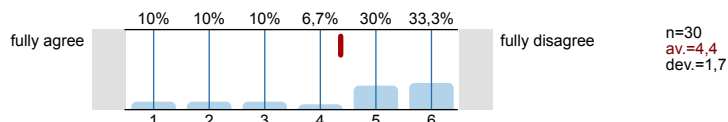


I can apply the content of the module/ unit.

2.5) This is my assessment after the module/ unit.

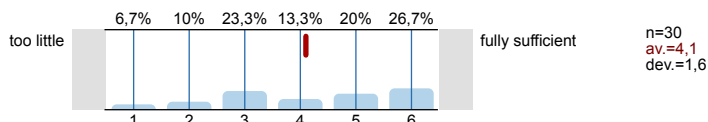


2.6) This is my assessment before the module/ unit.

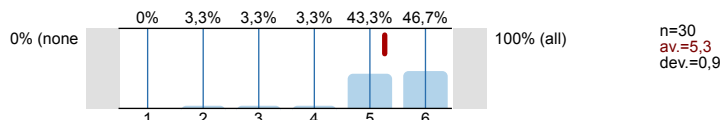


3. Requirements and Workload

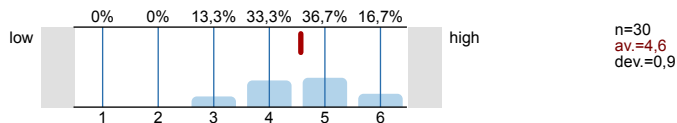
3.1) Was your previous knowledge sufficient to follow the course?



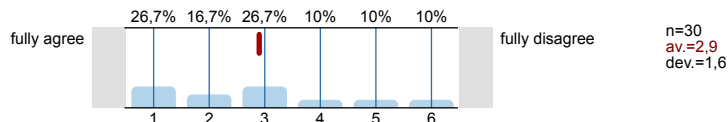
3.2) How many lectures/ seminars did you attend?



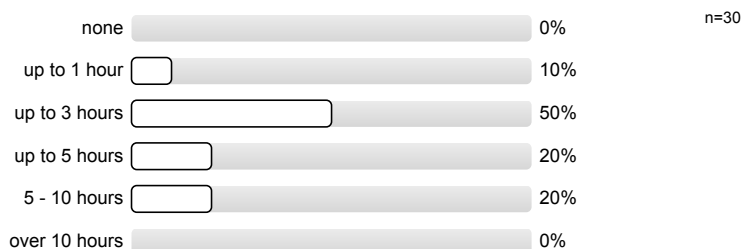
3.3) How would you evaluate the required preparatory work in relationship to the module content?



3.4) The workload corresponds to the ECTS earned in the module/ unit (1 ECTS = 30 hours)

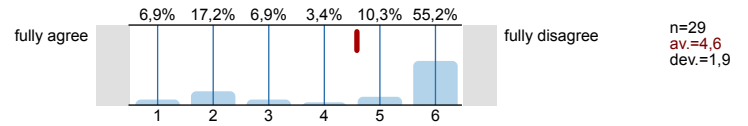


3.5) How much time do you spend per week for preparation and homework for this course?

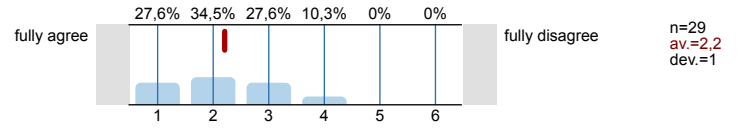


4. Student contribution to the teaching quality and general conditions

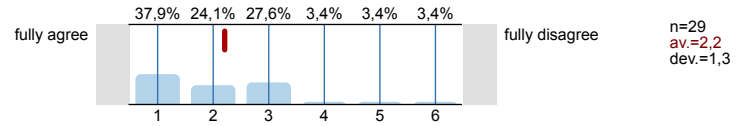
4.1) Fidgeting, chatting, and disturbances of participants interfere with the course.



4.2) The students contributed to a productive working atmosphere.

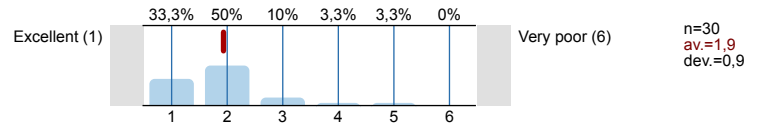


4.3) The spatial conditions of the event are appropriate.



5. A few more things we would like you to tell us...

5.1) Which grade would you give this module/ unit



5.2) Are you an exchange student?

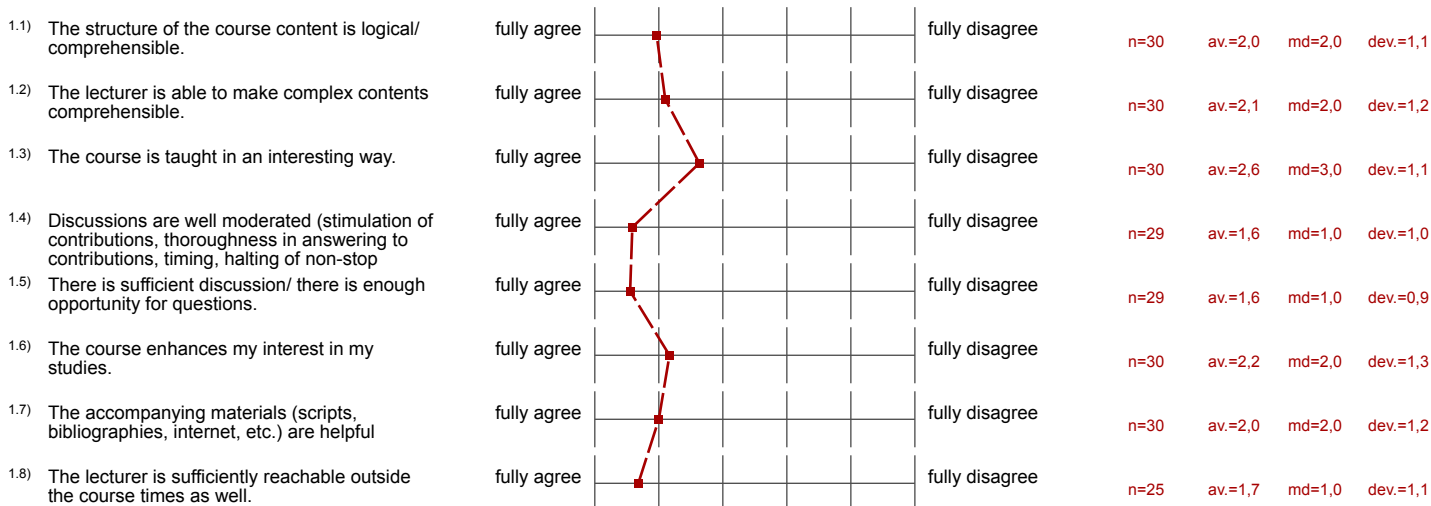


Profile

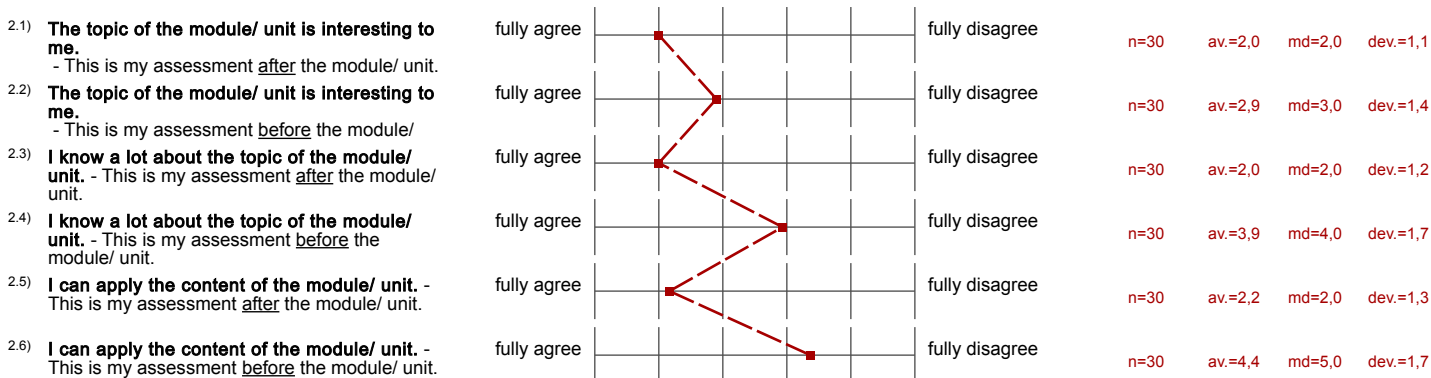
Compilation: Instructor profile

Values used in the profile line: Mean

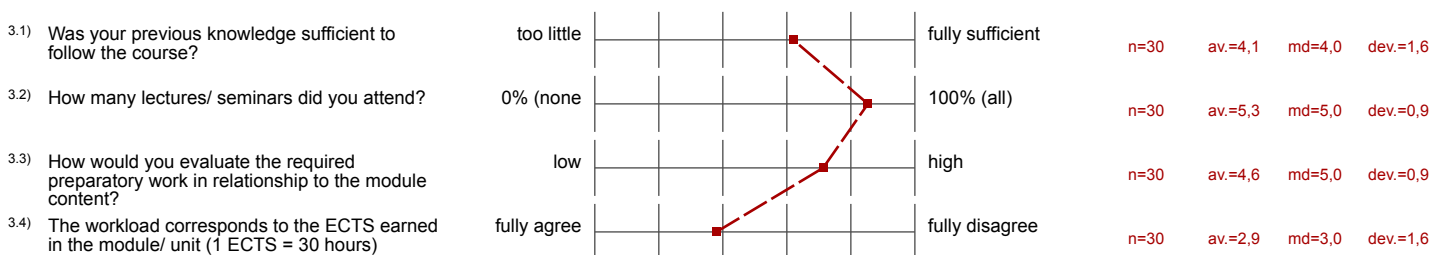
1. Please specify how far you agree or disagree with the following statements concerning this course. Please cross only one box.



2. Assessment of knowledge gains



3. Requirements and Workload



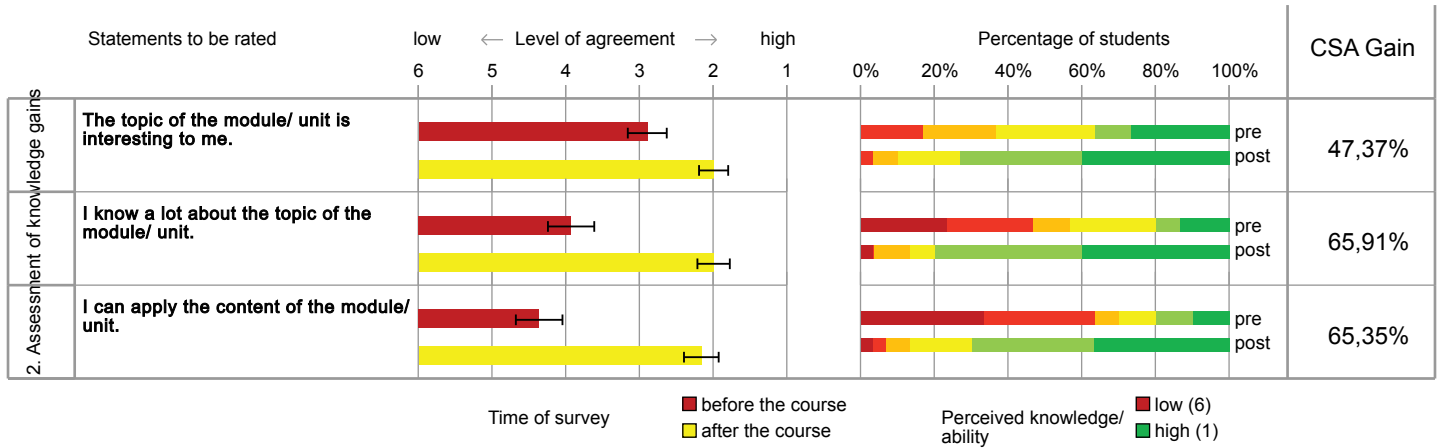
4. Student contribution to the teaching quality and general conditions

| | | | | | | | |
|---|-------------|--|----------------|------|---------|--------|----------|
| 4.1) Fidgeting, chatting, and disturbances of participants interfere with the course. | fully agree | | fully disagree | n=29 | av.=4,6 | md=6,0 | dev.=1,9 |
| 4.2) The students contributed to a productive working atmosphere. | fully agree | | fully disagree | n=29 | av.=2,2 | md=2,0 | dev.=1,0 |
| 4.3) The spatial conditions of the event are appropriate. | fully agree | | fully disagree | n=29 | av.=2,2 | md=2,0 | dev.=1,3 |

5. A few more things we would like you to tell us...

| | | | | | | | |
|---|---------------|--|---------------|------|---------|--------|----------|
| 5.1) Which grade would you give this module/ unit | Excellent (1) | | Very poor (6) | n=30 | av.=1,9 | md=2,0 | dev.=0,9 |
|---|---------------|--|---------------|------|---------|--------|----------|

Outcome-based evaluation



Data presentation adapted from Raupach et al. Med Teach 2011; 33: e446-ee453.
Error bars indicate standard errors of the mean.

Comments Report

5. A few more things we would like you to tell us...

5.3) What did you especially like about this course?

- -Well structured
- -Good overview about the OSI model

| | |
|--|--|
| <p>gute Vorlesungen. Die Übungen sind sehr gut. Es wurden alle Themen gut angegangen</p> | <p>Exercises, and course experience and explanations</p> |
|--|--|

| | |
|---------------------------------------|---|
| <p>THE POWERPOINT IS REALLY GOOD.</p> | <p>The friendly professor. That's necessary to make students understand a concept</p> |
|---------------------------------------|---|

| |
|--|
| <p>By using the terminal, microcontrollers or other tools, the theoretical part of the lecture was brought closer to practice.</p> |
|--|

- Examples and analogies made to explain terms or concepts.
- Exercises
- I liked the opportunity to ask a lot of questions in the exercises and the summary of the last lecture in the ex.
- Prof. Dr. Oliver Hahm explain everything excellent. I really like that he upload the answers for the exercises. This is really helpful when I revise the exercises.
- The tutor is always helpful, answers every question (even basic ones) and is quick with response. really liked it
- how professor hahm explain the exercise and to help to understand all content

5.4) Your suggestions for improvement:

| | |
|--|-----------------------------|
| <p>More exercises and more detailed connection</p> | <p>fewer abbreviations.</p> |
|--|-----------------------------|

| |
|--|
| <p>The exercises made with respect I will like that there should be an example per concept in the lecture slides. That's because the exercises just look very difficult, whereas they are easy. The way it's now, it is required And a description of how it's done in the lecture slides is not enough. A solved example is way better.</p> |
|--|

- I do not have any suggestions. Everything is very good.
- I had problems with the order you choose for teaching the different layers. To me it would be more accessible if we would have started from top down (Application layer first -> Physical last).
- The course is missing of real life examples and explanations of the use of the content. There is no "big picture" of the content. So it's difficult to understand if you don't inform yourself about the content.
- There is too much content in the full course and in the lecture slices too.

- it's a bit difficult sometimes to get a proper understanding for the usecases of the tough stuff.
- the content of lecture is too much difficult to understand with few example
- the lecturer presents the content in a monotone/boring way.
- there are a lot of abbreviations, it is not easy to follow them, maybe would be better to write the whole definition more times